

ANODIZED ALUMINUM BOAT HATCHES

4 Reasons to use Anchor Hatches

1. Our anodized products last longer.

During the anodizing process we subject our hatches to the formation of a permanent protective film on the aluminum surface by means of an electro-chemical process. This gives the alloy a durable non-toxic and easy to maintain surface. When complete, this process seals the open pores of the aluminum to protect against weathering, fading and salt water corrosion.

2. Our gaskets are designed for max effectiveness.

Our form fitted double-lip EPDM gasket compresses just the right amount when dogged to keep your hatch secure and water tight.

3. Our unique design offers maximum protection.

We take the extra step of anodizing our products after they have been cut. If you anodize sheets of aluminum and then cut them, it leaves the edges unprotected. Our innovative design process ensures top protection to last in all weather conditions.

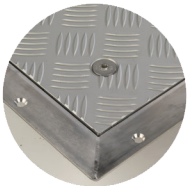
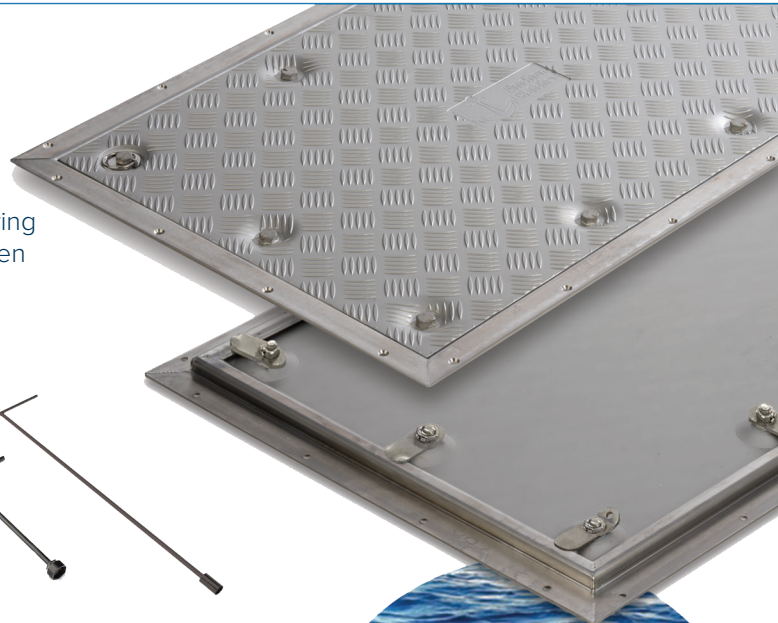
4. We test every product.

All of our hatches are leak tested in our facility prior to packaging and shipping.

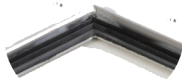
ENDURE Anodized Aluminum Hatches

Our **ENDURE** Hatches are made with a ¼ inch marine grade 5086 anodized aluminum cover and ¼ inch stainless steel frame. Our innovative design completely prevents premature corrosion by ensuring the metals do not come into contact with each other—doubling or even tripling the life of your hatch.

Available in seven standard sizes or custom designed on request. T-wrench available.



Flush-mounted design



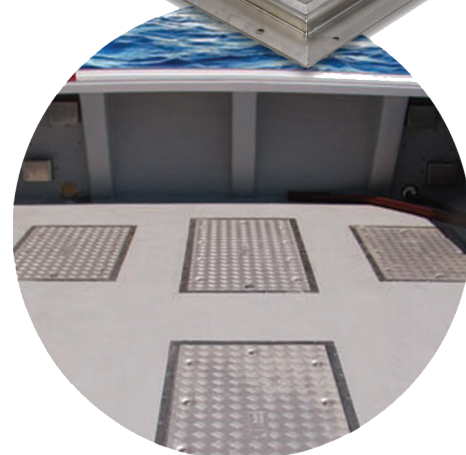
Replaceable double-lip EPDM gasket



Available in quick release



T-wrenches



Model	Clear Opening	Cover	Deck Cut-Out	Over Deck Flange
ENDURE-1212	10"x10"	11-3/4"x11-3/4"	12-1/4"x12-1/4"	15-1/4"x15-1/4"
ENDURE-1624	14"x22"	15-3/4"x23-3/4"	16-1/4"x24-1/4"	19-1/4"x27-1/4"
ENDURE-2030	18"x28"	19-3/4"x29-3/4"	20-1/4"x30-1/4"	23-1/4"x33-1/4"
ENDURE-2424	22"x22"	23-3/4"x23-3/4"	24-1/4"x24-1/4"	27-1/4"x27-1/4"
ENDURE-2430	22"x28"	23-3/4"x29-3/4"	24-1/4"x30-1/4"	27-1/4"x33-1/4"
ENDURE-2436	22"x34"	23-3/4"x35-3/4"	24-1/4"x36-1/4"	27-1/4"x39-1/4"
ENDURE-2448	22"x46"	23-3/4"x47-3/4"	24-1/4"x48-1/4"	27-1/4"x51-1/4"



1172 Camp Street, New Orleans, LA 70130

800-725-3787 | 504-525-7137

BRTMarine.com

PROUD DISTRIBUTOR OF

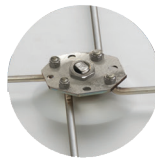
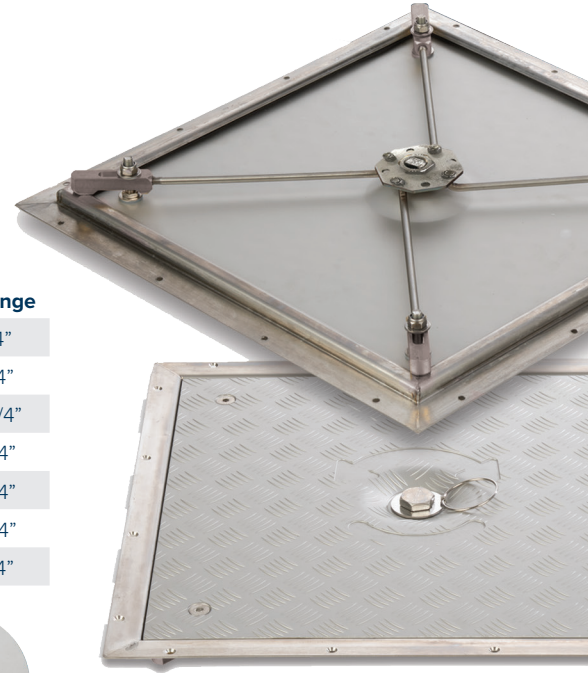


AGILE Quick Release Hatches

Built with the same marine grade anodized aluminum as our dogging style hatch, **AGILE** Quick Release Hatches offer a ¼ turn, single action mechanism for easy access. They offer stainless steel corrosive resistant dogs that are adjustable, allowing you to exert more pressure if needed, as well as adjustable seal pressure.

Moving parts are engineered to not require yearly maintenance.

Model	Clear Opening	Cover	Deck Cut-Out	Over Deck Flange
AGILE-1212	10"x10"	11-3/4"x11-3/4"	12-1/4"x12-1/4"	15-1/4"x15-1/4"
AGILE-1624	14"x22"	15-3/4"x23-3/4"	16-1/4"x24-1/4"	19-1/4"x27-1/4"
AGILE-2030	18"x28"	19-3/4"x29-3/4"	20-1/4"x30-1/4"	23-1/4"x33-1/4"
AGILE-2424	22"x22"	23-3/4"x23-3/4"	24-1/4"x24-1/4"	27-1/4"x27-1/4"
AGILE-2430	22"x28"	23-3/4"x29-3/4"	24-1/4"x30-1/4"	27-1/4"x33-1/4"
AGILE-2436	22"x34"	23-3/4"x35-3/4"	24-1/4"x36-1/4"	27-1/4"x39-1/4"
AGILE-2448	22"x46"	23-3/4"x47-3/4"	24-1/4"x48-1/4"	27-1/4"x51-1/4"



Single-turn mechanism



Brass corrosive resistant dog

INCITE Round Fuel Hatches

Our **INCITE** Round Fuel Hatches also come with an anodized aluminum cover and frame. We cut and form the hatch before this pro-grade protection is applied to ensure that the critical bolt holes and edges get anodized.

• Flush mounted design • Anti-corrosion dogging mechanism • Safety rope attachment

Model	Clear Opening	Cover	Deck Cut-Out	Over Deck Flange
INCITE-7QR	6"	6-3/4"	7-3/8"	8-1/2"
INCITE-10QR	9-5/32"	9-7/8"	10-9/16"	11-3/4"



CUSTOM HATCHES

Split cover engine hatches ideal for easy lifting by one person. We also offer single covers and a raised hatch to accommodate high engines. These hatches have a strong back brace for extra strength and a gutter around them to expedite water evacuation.

Also Available:

- Hatch hinges
- Gutter systems
- Solid lift handles
- Raised hatches
- Gas springs
- Split hatches

MARINE ACCESSORIES

Our wide selection of marine accessories are built with the same quality materials, craftsmanship and innovation as our line of boat hatches. Marine accessories include:

- Stainless steel bow rails
- Stainless steel grab rails
- Seat posts
- Ladder & steps
- Radar mounts
- Rudders & shoes
- Pump brackets & engine mounting systems
- Boat shafting
- Fuel & hydraulic tanks
- Propeller shafts
- Engine box enclosures
- Shaft couplings (split type)
- Brass propeller nuts



PROUD DISTRIBUTOR OF



1172 Camp Street, New Orleans, LA 70130

800-725-3787 | 504-525-7137

BRTMarine.com